

Shallow water depth project

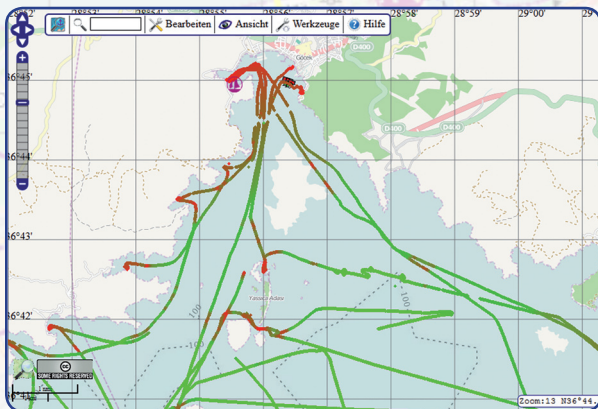
Sure! A nautical chart needs water depths. Unfortunately, in most countries data on shallow water depth is not freely available. For that reason, we would like to collaboratively survey the coast lines worldwide.

Our goal is to create an open and free nautical chart for everybody!

Join us!

For all info and instructions, see
<http://depth.openseamap.org>

On our website, you are also able to upload data onto our server and learn more about the project OpenSeaMap.



Rendering of logged data

About OpenSeaMap

OpenSeaMap – the free nautical chart – is a free project for mapping worldwide oceans and inland waterways. In their spare time, thousands of yachtsmen, motorboat drivers, divers, canoeists and other water sport enthusiasts collect nautical information and geodata they consider necessary and useful to be included in a nautical chart. According to the Wiki-principle, they enter it into a data base. The result is an open and cost-free nautical chart.

OpenSeaMap integrates:

- Weather data
- Harbour guide
- Index of nautical lights
- Aerial images
- AIS
- Continental maps
- Tourist information and much more

Contact:

Markus Bärlocher

+49 9155 1715

Markus@OpenSeaMap.org

OpenSeaMap.org

OpenSeaMap – the free Nautical Chart



For skippers

**Mapping water depths
quick and easy**

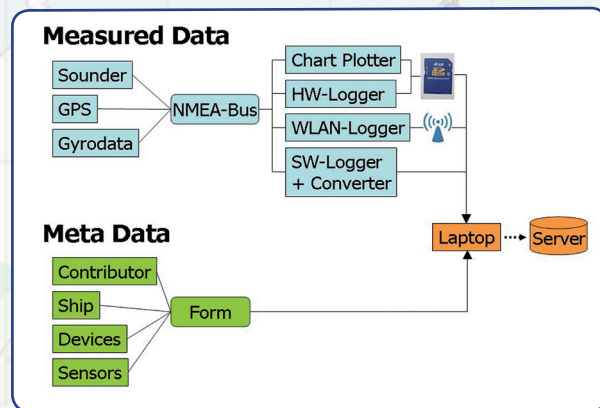
Everybody can contribute depth data

Collecting data is easy. Every ship with GPS and sounder can participate. The data regarding position and depth is recorded in NMEA format. You simply have to save it. There are several options for that:

- Chart plotter
- Software logger
- WLAN logger
- Hardware-logger

Subsequently, you open an online-account and provide the data to the community.

That's it!



From the signal to the OpenSeaMap server

Let's get started!

Find all info and detailed instructions for gathering data here:

<http://depth.openseamap.org>

If your ship requires a hardware-logger for gathering data, you can order it at cost price (€ 35,-) here:

<http://depth.openseamap.org/order-logger>

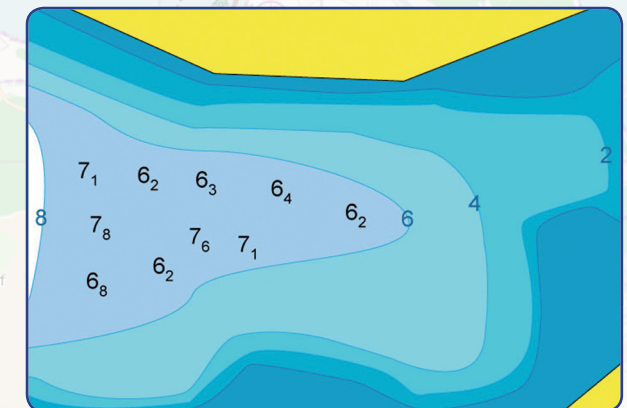


Hardware-logger of OpenSeaMap

*Where you are sailing,
you know the place!*

*Where you are at home,
you are the expert!*

*Share your knowledge
worldwide!*



Shallow water depths at Guebsensee